

# T



DOWNLOAD  
THE BROCHURE



WATCH THE  
VIDEO

**SIMEX**  
• patented •

## WHEEL SAWS

### category



SSL High  
Flow



SSL High  
Power



Front Loader

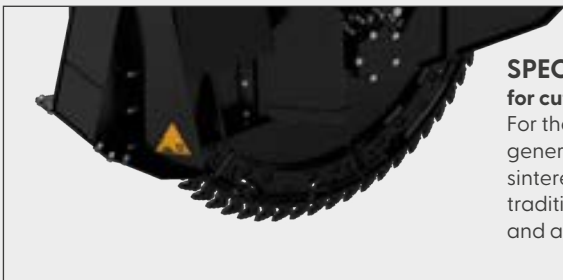
### models

T 200 | T 300 | T 450 | T 600 | T 800

Designed for **set-section trenches on hard and compact surfaces** such as asphalt, cement, and rock, the T wheel saws for skid steer mounting offer cutting and trenching options for depths from 150 to 800 mm, and for widths from 25 to 250 mm.



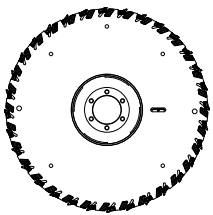
- A SIDE DISCHARGE OF MATERIAL**  
The special design of the outlets ensures the correct expulsion of the milled material, leaving the trench cleared at the set depth.
- B** Nebulizer for reducing dust emission (optional)
- C** Hydraulic depth adjustment (starting from T 450).
- D** Hydraulic side shift
- E** Cutting disks for widths from 25 to 250 mm, and depths from 150 to 800 mm.
- F SEGMENTED DISK**  
(Only T450S and T600S models). Disk with removable, interchangeable segments allows quick variation of the trench width while maintaining the same base wheel.



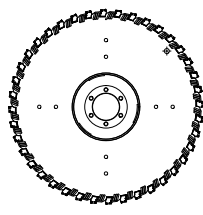
### SPECIAL TOOLS FOR MINI- AND MICRO-TRENCHING for cutting widths 25 mm and up

For the construction of mini- and micro-trenches, Simex has introduced a new-generation tool in which the tungsten carbide is coated on the outside with a layer of sintered polycrystalline diamond (PCD). This provides greater durability compared to traditional tools, higher peripheral disk speeds—and therefore greater productivity—and a cleaner cutting edge.

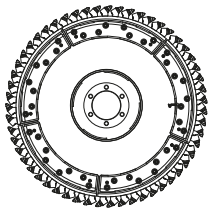
#### AVAILABLE WHEELS



One-piece wheel with teeth

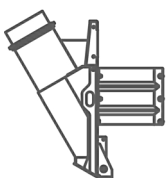


One-piece wheel with diamond tools



Segmented wheel with teeth

#### OPTIONALS

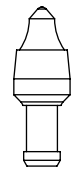


Aspiration Kit

#### STANDARD TEETH FOR ASPHALT CEMENT AND ROCK



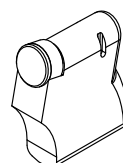
For wheel widths between 25 and 30 mm



For wheel widths between 40 and 50 mm



For wheel widths 80 mm or greater



Diamond tool for micro-trenching

## MINI- AND MICRO-TRENCHING

Unlike with conventional trenching, mini- and micro-trenching are much faster, with much lower production of waste material, considerably lower restoration times and costs. Furthermore, possibility of using smaller construction machines reduces the size of road construction sites benefiting traffic conditions, especially in urban areas.



## SEGMENTED WHEEL

T 450S and T 600S models are fitted with segmented wheels. This allows quick variation of the trench width while maintaining the same base wheel. Segments range from a minimum of 50 up to a maximum of 200 mm width. Assembling and disassembling segments can be done without long machine downtimes or needing the workshop.



## THE T800 MODEL: FOR HIGH HYDRAULIC POWER

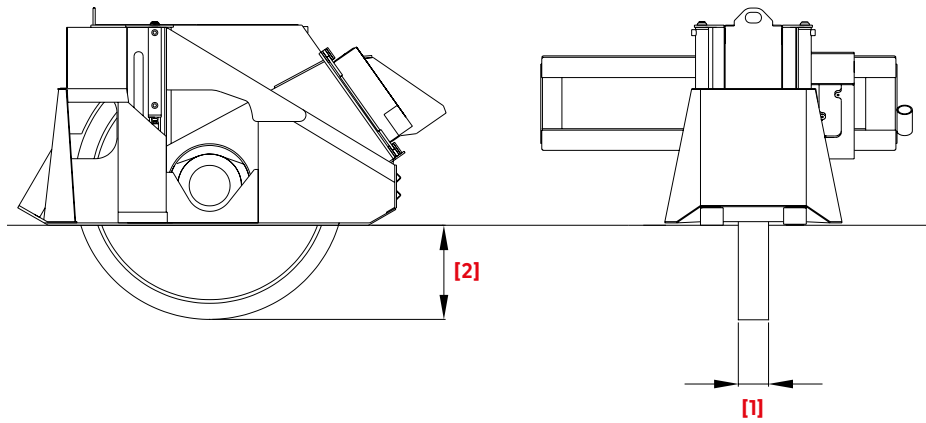
The T800 is fitted with a built-in motor that enters the trench, to reach depths of up to 800 mm. This is also the only model that works in reverse.



## TRENCH CLEARING DEVICE

The trench clearing device consists of a hydraulically-operated blade that ensures the correct expulsion of material, preparing the trench for laying underground utilities.





TECHNICAL DATA		T 200	T 300	T 450 (S *)	T 600 (S *)	T 800
<b>Trench width [1]</b>	mm	25 - 30 - 40 - 50	25 - 30 - 50 - 80	50 - 80 - 100 130 - 160 - 200	80 - 100 - 130 160 - 200	250
	inch	1 - 1.2 - 1.6 - 2	1 - 1.2 - 2 - 3.2	2 - 3.2 - 4 - 5 - 6.3 - 8	3.2 - 4 - 5 - 6.3 - 8	10
<b>Trench depth [2]</b>	mm	200	300	150 - 450	200 - 600	450 - 800
	inch	8	12	6 - 17	8 - 24	17 - 31
<b>Depth adjustment</b>		-	-	hydraulic	hydraulic	hydraulic
<b>Side shift</b>		mechanical	hydraulic	hydraulic	hydraulic	hydraulic
<b>Trench clearing device</b>		-	•	•	•	-
<b>Segmented wheel</b>		-	-	•	•	-
<b>Aspiration device</b>		-	•	•	•	-
<b>Operating weight with standard wheel (*)</b>	kg	270	665	1115	1340	1430
	lbs	600	1460	2450	2950	3150
<b>Required oil flow</b>	l/min	35 - 75	60 - 115	100 - 160	110 - 170	110 - 170
	gpm	9 - 20	16 - 30	27 - 42	29 - 45	29 - 45
<b>Maximum oil pressure</b>	bar	250	300	300	300	300
	psi	3625	4350	4350	4350	4350

• upon request

\* The installer is responsible for ensuring that the equipment meets the prime mover's specifications and weight requirement. \* Only for T450 S and T600 S models. Fitted with segmented wheels. Simex does not accept responsibility or liability for the information provided. Technical modifications may vary without prior notice.