

CBE



DOWNLOAD
THE BROCHURE



WATCH THE
VIDEO

SIMEX
• patented •

CRUSHER BUCKETS

category

8 - 55 TON



Midi Exc.



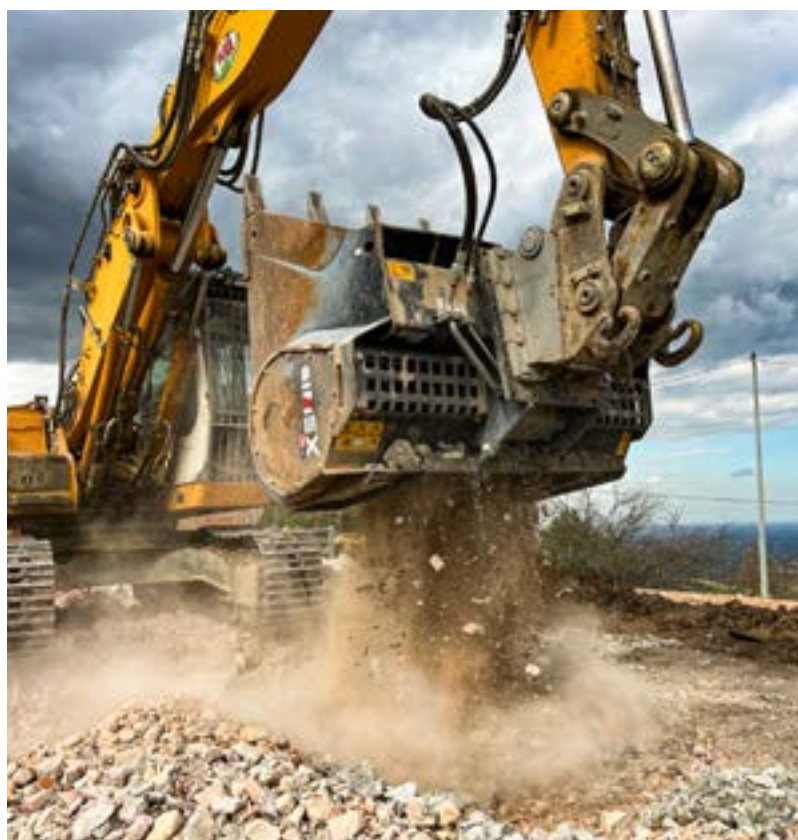
Exc.

models

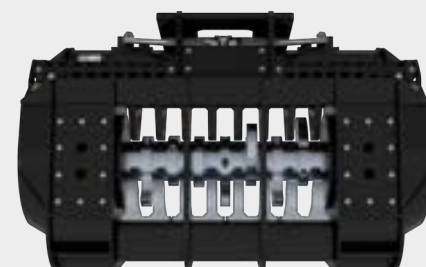
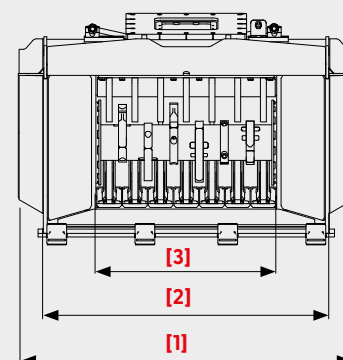
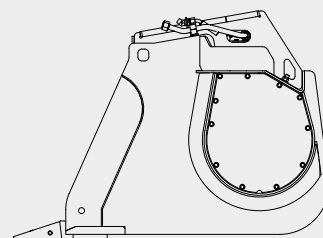
CBE 10 | CBE 20 | CBE 30 | CBE 40 | CBE 50



The CBE crusher buckets for excavators are designed for the **volumetric reduction of aggregates directly on site** and are ideal for crushing reinforced concrete and demolition materials. The rotor system they are equipped with and the high tooth force generated, allow optimal work with iron, rock, earth and deformable, damp or wet parts. The rotor with teeth is driven by direct-drive, high-displacement radial piston hydraulic motors. An automatic system inverts the rotation of the drum to avoid blockages and machine downtimes.



- A THE TOOLS ENGAGE THE SHAFT** without any welding and are easy and quick to replace.
- B TWO RADIAL PISTON HYDRAULIC MOTORS**, high-displacement, in direct drive with the drum, generate high tooth force. This ensures work is efficient and constant even with rebars inside the reinforced concrete.
- C REMOVABLE BLADES OF VARIOUS SIZES** to vary the size of the crushed material output
- D AUTOMATIC SYSTEM INVERTS THE ROTATION OF THE DRUM** in case of blocking, granting high productivity and avoiding downtimes.



FEARLESS AGAINST IRON REBARS

In the treatment of aggregates, reinforced concrete is one of the most difficult materials to crush. The CBE buckets, thanks to the rotor system and the high tooth force, are fearless against the iron rebars inside demolition waste.

BREAKABLE MATERIALS:

masonry, reinforced concrete, bricks, natural aggregates, concrete, tiles, glass, and asphalt slabs.



CONSTRUCTION WASTE

BEFORE

AFTER



DEMOLITION WASTE

BEFORE

AFTER



REINFORCED CONCRETE

BEFORE

AFTER



TECHNICAL DATA		CBE 10	CBE 20	CBE 30	CBE 40	CBE 50
Recommended excavator weight (*)(**)	ton	8 - 13	10 - 18	16 - 28	24 - 40	38 - 55
	lbs	17500 - 28600	22000 - 40000	35000 - 61600	53000 - 88000	84000 - 121000
Total width [1]	mm	1220	1485	1700	1960	2440
	inch	48	58	67	77	96
Mouth width [2]	mm	1030	1180	1410	1630	2200
	inch	41	46	55	64	87
Rotor width [3]	mm	725	735	915	1050	1290
	inch	28	29	36	41	51
Bucket capacity (SAE)	m ³	0.40	0.60	0.80	1.00	1.80
	y ³	0.52	0.78	1.04	1.30	2.35
Number of teeth	no.	5	5	6	7	10
	kN	kN	95	125	152	190
Max. tooth force	lbf	18000	21500	28000	34000	42700
	kg	kg	1320	2170	2900	4640
Unladen bucket weight (***)	lbs	1950	2900	4800	6400	10200
	l/min	l/min	100 - 190	150 - 250	200 - 350	300 - 550
Required oil flow	gpm	21 - 42	26 - 50	40 - 66	53 - 92	79 - 145
	bar	350	350	350	350	350
Maximum oil pressure	psi	5100	5100	5100	5100	5100

* The operating load permitted for the excavator, when added to the weight of the standard bucket, must match or exceed the weight of the crusher bucket at full load. ** The installer is responsible for ensuring that the equipment meets the excavator's specifications and weight requirement. *** Without mounting bracket. Simex does not accept responsibility or liability for the information provided. Technical modifications may vary without prior notice.