

RW/RWA



DOWNLOAD
THE BROCHURE



WATCH THE
VIDEO

SIMEX
• patented •

SELF-LEVELLING WHEEL SAWS

category



SSL High
Flow



SSL High
Power



SSL Standard
Flow

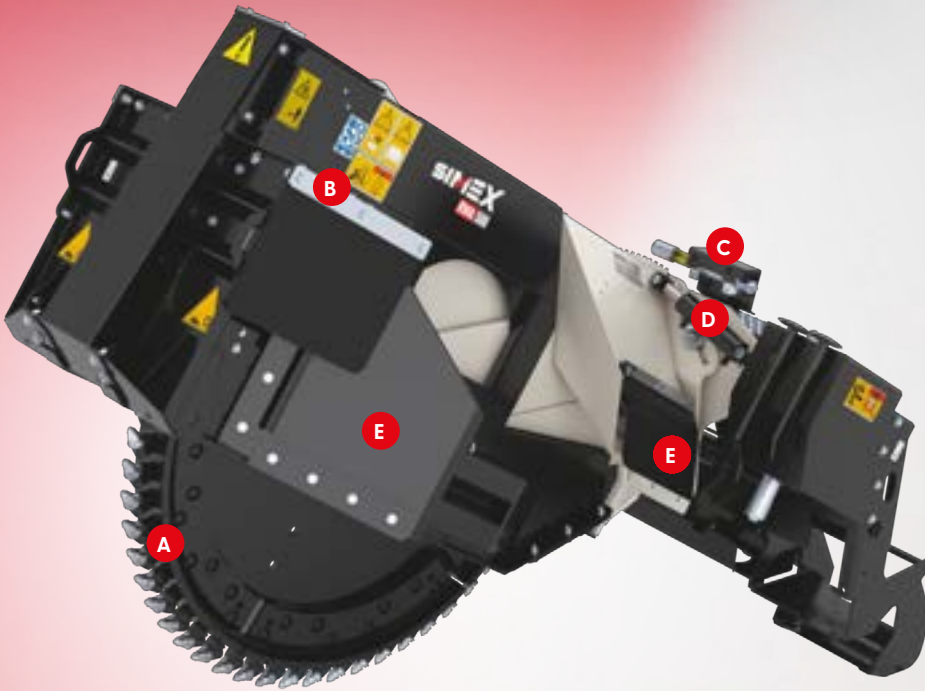


Front Loader

models

RW 200 | RW 300 | RW 350 | RW 400
RW 500 | RWA 500 | RWA 700

Designed for skid steer mounting, Simex RW and RWA wheel saws offer a variety of solutions for working on hard or compact surfaces such as asphalt, cement and rock: **cutting and narrow trenches, set-section trenches, mini- and micro-trenches** for laying fibre optic cables.



A SEGMENTED WHEEL (ONLY RW/RWA 500 AND RWA 700 MODELS).
Disk with removable, interchangeable segments allows quick variation of the trench width while maintaining the same base wheel.

B Nebulizer for dust suppression



C PERFORMER
Performer (Simex patented): allows the operator to optimize the equipment's performance according to the forward speed of the construction machine.

D HYDRAULIC LATERAL TILT (ONLY RWA MODEL).
Simex patented, allows cutting disk to be always vertical and perpendicular to ground, even when construction machine is not parallel to the road surface.

E SIDE DISCHARGE OF MATERIAL
The special design of the outlets ensures the correct expulsion of the milled material, leaving the trench cleared at the set depth.



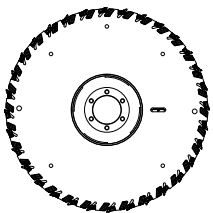
THE SELF-LEVELLING SYSTEM
ensures constant trench depth in any condition, regardless of ground contour or the position of the attachment with respect to the prime mover.



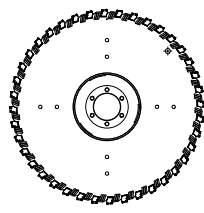
SPECIAL TOOLS FOR MINI- AND MICRO-TRENCHING
for cutting widths 25 mm and up

For the construction of mini- and micro-trenches, Simex has introduced a new-generation tool in which the tungsten carbide is coated on the outside with a layer of sintered polycrystalline diamond (PCD). This provides greater durability compared to traditional tools, higher peripheral disk speeds—and therefore greater productivity—and a cleaner cutting edge.

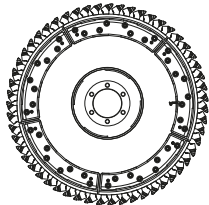
AVAILABLE WHEELS



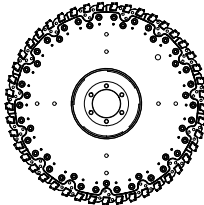
One-piece wheel with teeth



One-piece wheel with diamond tools



Segmented wheel with teeth



Segmented wheel with diamond tools

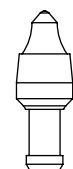
STANDARD TEETH FOR ASPHALT CEMENT AND ROCK



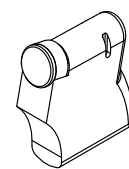
For wheel widths between 25 and 30 mm



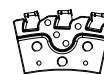
For wheel widths 80 mm or greater



For wheel widths between 40 and 50 mm



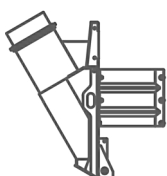
Diamond tool for micro-trenching



Segments with diamond tools for micro-trenching

Segments with teeth for widths over 40 mm

OPTIONALS



Aspiration Kit

MINI- AND MICRO-TRENCHING

Unlike with conventional trenching, mini- and micro-trenching are much faster, with much lower production of waste material, considerably lower restoration times and costs. Furthermore, possibility of using smaller construction machines reduces the size of road construction sites benefiting traffic conditions, especially in urban areas.



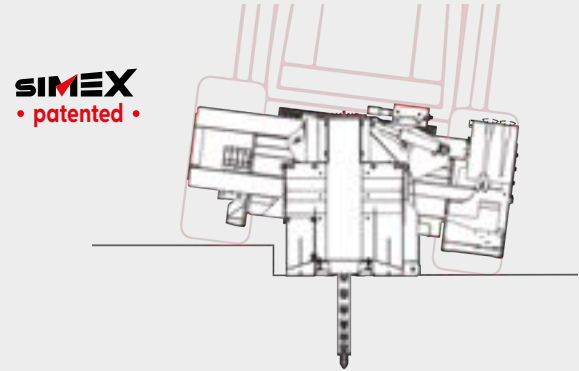
RW200, RW 300 AND RW 350: FOR MOUNTING ON SKID STEER LOADERS AND EXCAVATORS

Specifically designed for micro- and mini-trenching for fibre optic cable installation in final connections to buildings, RW 200, RW 300 and RW 350 stand out for their versatility: they are designed for both skid steer and excavator boom mounting (with special mounting bracket). The two attachments ensure cutting and small-section trenches on hard and compact surfaces such as asphalt and cement, for trench widths from 25 to 80 mm and depths from 100 to 350 mm.



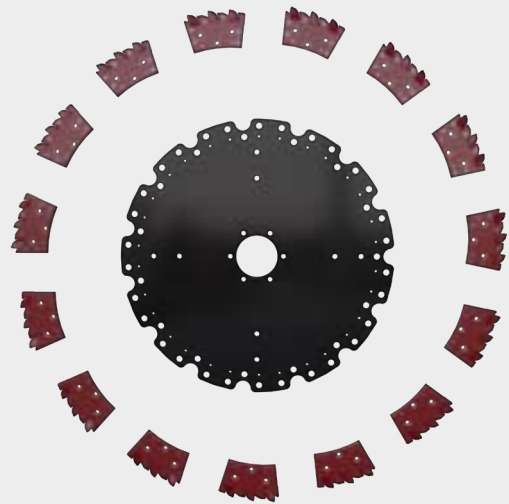
HYDRAULIC LATERAL TILT

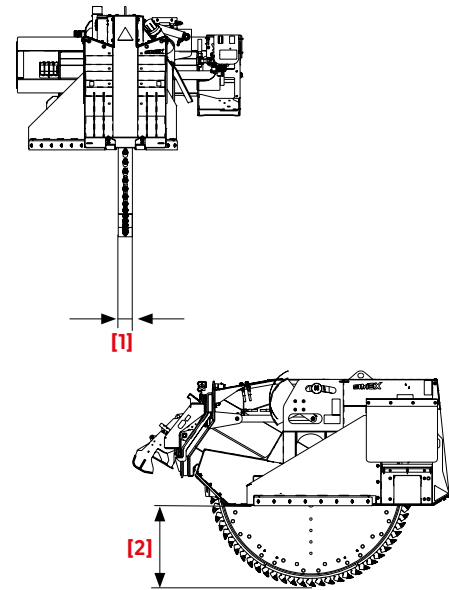
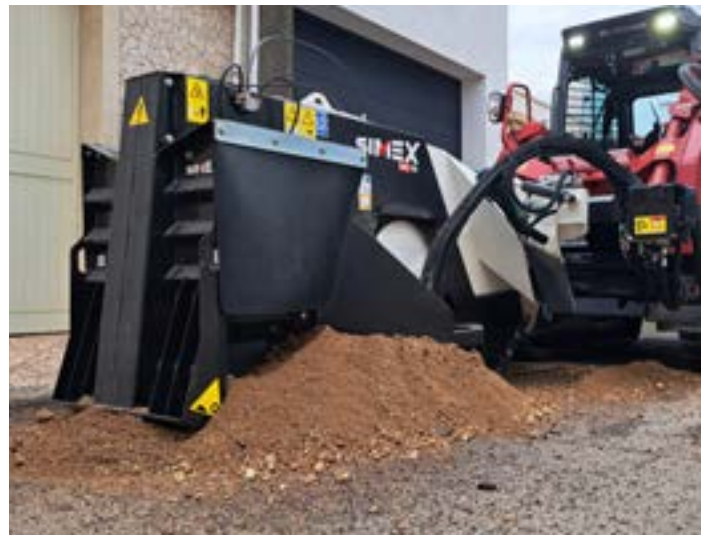
The RWA 500 and RWA 700 models are fitted with hydraulic lateral tilt, which allows keeping the wheel saw always vertical, even when the prime mover is not parallel to the road surface, as in the case of trenching near footpaths.



SEGMENTED WHEEL

RW 350 - RW 400 - RW 500 - RWA 500 - RWA 7000 models are fitted with segmented wheels. This allows quick variation of the trench width while maintaining the same base wheel. Segments range from a minimum of 30 up to 120 mm width. Assembling and disassembling segments can be done without long machine downtimes or needing the workshop.





| TECHNICAL DATA | | RW 200 | RW 300 | RW 350 | RW 400 | RW 500 | RWA 500 | RWA 700 |
|-----------------------------|-------|-------------------|-------------------------|-------------------------|-------------------------|----------------------|----------------------|-----------------|
| Trench width [1] | mm | 25 - 30 - 40 - 50 | 25 - 30 - 40 50 - 80 | 25 - 30 - 40 50 - 80 | 25 - 30 - 40 50 - 80 | 50 - 80 - 100 120 | 50 - 80 - 100 120 | 80 - 100 120 |
| | inch | 1 - 1.2 - 1.6 - 2 | 1-1.2-1.6-2-3.2 | 1-1.2-1.6-2-3.2 | 1-1.2-1.6-2-3.2 | 2-3.2-4-5 | 2-3.2-4-5 | 3.2-4-5 |
| Trench depth [2] | mm | 100 - 200 | 200-250-300 | 250-300-350 | 200-400 | 250-500 | 250-500 | 450-700 |
| | inch | 4 - 8 | 8-10-12 | 10-12-14 | 8-16 | 10-20 | 10-20 | 18-28 |
| Depth adjustment | | mechanical | mechanical | mechanical | mechanical hydraulic | hydraulic | hydraulic | hydraulic |
| Side shift | | mechanical | hydraulic | hydraulic | hydraulic | hydraulic | hydraulic | hydraulic |
| Lateral tilt | | - | - | - | - | - | ■ | ■ |
| Wheel type | | standard | standard | standard / segmented | standard / segmented | segmented | segmented | segmented |
| Operating weight (*) | kg | 260 (2) - 275 (3) | 730 (2)-790 (3) | 940 (2)-1030 (4) | 940 (2)-1030 (4) | 1275-1340 | 1300-1400 | 1750-1850 |
| | lbs | 570 (2) - 605 (3) | 1600 (2)-1740 (3) | 2070 (2)-2250 (4) | 2070 (2)-2250 (4) | 2800-2950 | 2860-3080 | 3850-4070 |
| Required oil flow | l/min | 30 - 70 | 60-115 | 90-130 | 90-150 | 100-160 | 101-160 | 102-160 |
| | gpm | 8 - 18 | 16-30 | 24-34 | 24-40 | 27-43 | 28-43 | 29-43 |
| Maximum oil pressure | bar | 250 | 300 | 300 | 300 | 300 | 300 | 300 |
| | psi | 3625 | 4350 | 4350 | 4350 | 4350 | 4350 | 4350 |
| Aspiration device | | - | - | - | • | • | • | • |

• upon request

■ hydraulic (standard)

* The installer is responsible for ensuring that the equipment meets the prime mover's specifications and weight requirement. 2. With trench wheel width: 25 mm. 3. With trench wheel width: 50 mm. 4. With trench wheel width: 80 mm. Simex does not accept responsibility or liability for the information provided. Technical modifications may vary without prior notice.