

# TFV



DOWNLOAD  
THE BROCHURE



WATCH THE  
VIDEO



## VERTICAL CUTTER HEADS

### category



Midi Exc.



Exc.



Backhoe

7 - 25 TON

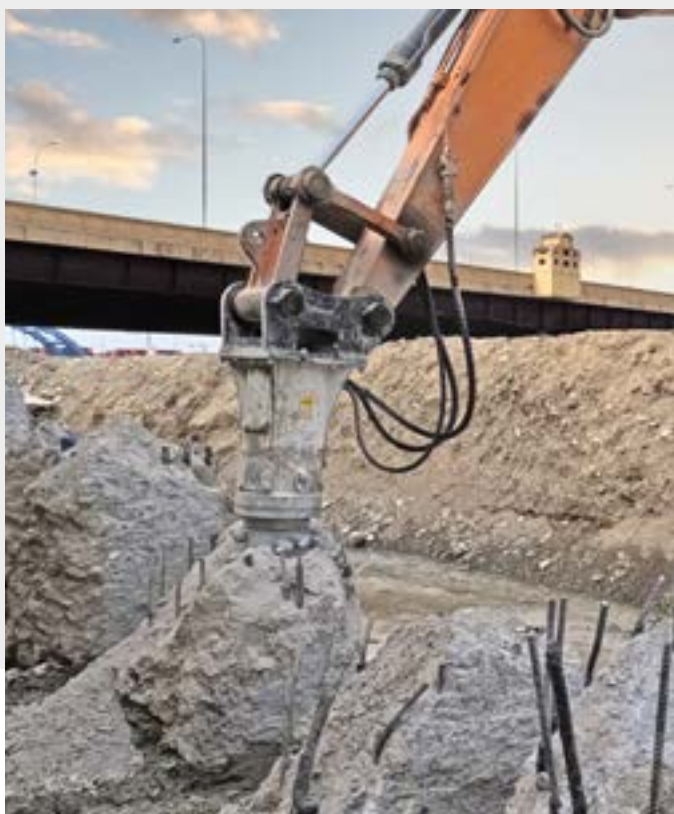
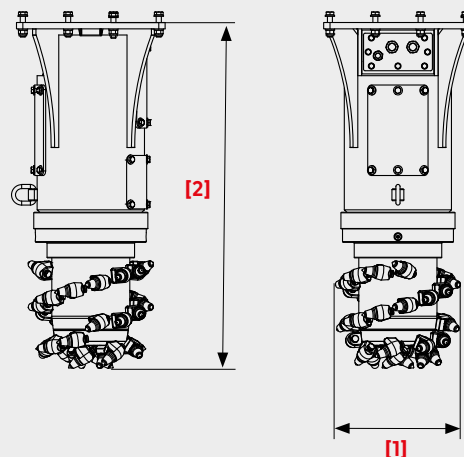
### models

TFV 400 | TFV 600 | TFV 850

Designed for mounting on excavator booms, the TFV vertical cutter heads are ideal for profiling, excavating irregular shapes, cropping and cleaning pillars, trenching smaller widths, removing iron and steel residues, or mixing soils.



- A** Filter on feed line
- B** Flow control valve
- C** Radial piston motor generates high cutting force
- D** Drum fitted with mechanical gaskets for underwater works



### CROPPING REINFORCED CONCRETE PILLARS

The vertical cutter head is often used in cropping pole heads in reinforced concrete, in order to strip the rebar. The cutter head ensures precision in the work area, while at the same time producing crushed material of a particle size suitable for immediate transfer to disposal centres or on-site reuse.



TECHNICAL DATA		TFV 400	TFV 600	TFV 850
Recommended excavator weight (*)	ton	7 - 12	10 - 18	15 - 25
	lbs	15400 - 26400	22000 - 39600	33000 - 55000
Speed of rotation	rpm	100	90	80
Diameter [1]	mm	380	420	450
	inch	15	17	18
Height without mounting bracket [2]	mm	1000	1100	1200
	inch	40	43	48
Max. power	kW (hp)	37 (50)	50 (68)	60 (82)
	kg	245	400	570
Operating weight [2]	lbs	540	880	1255
	l/min	60 - 110	100 - 140	120 - 170
Required oil flow (**)	gpm	16 - 29	26 - 37	32 - 45
	bar	350	350	350
Maximum pressure	psi	5100	5100	5100

\* The installer is responsible for ensuring that the equipment meets the excavator's specifications and weight requirement. \*\* Without mounting bracket attaching to prime mover. Simex does not accept responsibility or liability for the information provided. Technical modifications may vary without prior notice.